



Price List

Believe
Revive
Thrive



BLANCOZ

Sachdev Scientific Equipments Pvt Ltd, a company established in 2015 with a 40000 Sq. Ft. dust free plant in Raipur-Chhattisgarh, is proud to introduce a new top of the line high quality products that will cater the needs of the ever-growing world of Science.

“Blancoz” a brand created from scratch by the sheer admiration, focus, and commitment that will only serve a purpose to do everything it can to fulfil and gratify its valuable customers. Products that will come under the Blancoz umbrella are as follows and expecting to serve you better.

Team

Sachdev Scientific Equipments Pvt. Ltd.





वग्नः शैशः वदेः अेषासा
नमस्ते
你好
प्रणाम आदाब नमस्ते
Halo Bonjour
नमस्ते
السلام عليكم
Salut नमस्ते Ola
வணக்கம்! ciao
здравствуйте सति मी अकाल Hello नमस्कार डालवे

Dear Customers,

Extending our warm greetings,

When **Sachdev Scientific Equipments Pvt. Ltd.** was established in 2015, we felt an almost limitless enthusiasm for the possibilities of ways we are going to serve the world of science, which lead us to the introduction of our brand **"Blancoz"**.

Our confidence in **"Blancoz"** is built on the belief that we must constantly evolve to meet the changing needs of the ever growing world of science, and education. We are ready for these changes.

Hopefully, the products you come across in this brochure serve you in the best possible manner and live upto your expectations.

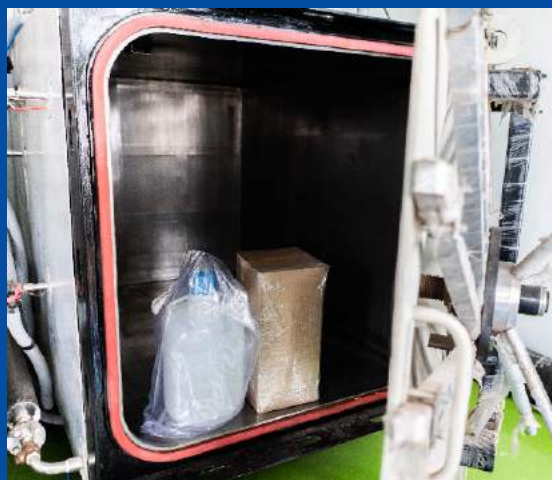
Thank you for taking the time to learn about our company. Warm regards,

Team,

Sachdev Scientific Equipments Pvt. Ltd.

здравствуйте सति मी अकाल Hello नमस्कार डालवे
नमस्कारः नमस्कार नमस्कार

Infrastructure





BOTTLE

PAGE 01-07



RACK / STAND STORAGE BOX

PAGE 22-26



PCR RANGE

PAGE 47-51



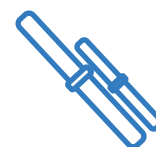
CARBOY

PAGE 08-12



LIQUID HANDLING

PAGE 27-43



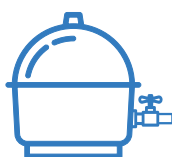
PTFE WARE

PAGE 52-58



CONSUMABLES

PAGE 13-21



DESICCATOR

PAGE 44-46



INSTRUMENTS

PAGE 59-70

A stylized graphic of a bottle, rendered in various shades of blue. The top part shows a grid-like structure, possibly representing a cap or a filter. The main body of the bottle is a large, rounded rectangle with a curved bottom. The graphic is composed of several overlapping, semi-transparent blue shapes that create a sense of depth and movement.

BOTTLE

- 101. Narrow Mouth Bottle PP
- 102. Narrow Mouth Bottle LDPE
- 103. Narrow Mouth Bottle HDPE
- 105. Narrow Mouth Bottle HDPE Amber
- 109. Wide Mouth Bottle PP
- 110. Wide Mouth Bottle LDPE
- 226. Narrow Mouth Bottle LDPE Sterile
- 227. Wide Mouth Bottle LDPE Sterile
- 111. Wide Mouth Bottle HDPE
- 113. Wide Mouth Bottle HDPE Amber
- 106. Narrow Mouth Bottle PP Medical Grade
- 230. Narrow Mouth Bottle PP
- 231. Narrow Mouth Bottle LDPE
- 107. Narrow Mouth Bottle LDPE Medical Grade
- 108. Heavy Duty Vacuum Bottle PP Medical Grade
- 232. Heavy Duty Vacuum Bottle PP
- 116. Aspirator Bottle With Stop Cock Medical Grade
- 234. Aspirator Bottle With Stop Cock PP
- 233. Wide Mouth Bottle With Handle PP
- 114. Wide Mouth Bottle With Handle PP Medical Grade

101 Narrow Mouth Bottle PP

Material : Polypropylene Fully Autoclavable Leak Proof

Code	Capacity ml	Packing
1010004	4	100
1010008	8	100
1010015	15	100
1010030	30	12
1010060	60	12
1010125	125	12
1010250	250	12
1010500	500	6
1011000	1000	6



102 Narrow Mouth Bottle LDPE

Material : Low Density Polyethylene (LDPE) Leak Proof

Code	Capacity ml	Packing
1020004	4	100
1020008	8	100
1020015	15	100
1020030	30	12
1020060	60	12
1020125	125	12
1020250	250	12
1020500	500	6
1021000	1000	6



103 Narrow Mouth Bottle HDPE

Material : High Density Polyethylene (HDPE) Leak Proof

Code	Capacity ml	Packing
1030004	4	100
1030008	8	100
1030015	15	100
1030030	30	12
1030060	60	12
1030125	125	12
1030250	250	12
1030500	500	6
1031000	1000	6



105 Narrow Mouth Bottle HDPE Amber

Material : High Density Polyethylene Leak Proof

Code	Capacity ml	Packing
1050004	4	100
1050008	8	100
1050015	15	100
1050030	30	12
1050060	60	12
1050125	125	12
1050250	250	12
1050500	500	6
1051000	1000	6



109 Wide Mouth Bottle PP

Material : Polypropylene Leak Proof

Code	Capacity ml	Packing
1090030	30	12
1090060	60	12
1090125	125	12
1090250	250	12
1090500	500	6
1091000	1000	6

110 Wide Mouth Bottle LDPE

Material : Low Density Polyethylene Leak Proof

Code	Capacity ml	Packing
1100030	30	12
1100060	60	12
1100125	125	12
1100250	250	12
1100500	500	6
1101000	1000	6



NEW

226 Narrow Mouth Bottle LDPE Sterile

Material : Low Density Polyethylene Leak Proof Individually Packed

Code	Capacity ml	Packing
2260004	4	100
2260008	8	100
2260015	15	100
2260030	30	12
2260060	60	12
2260125	125	12
2260250	250	12
2260500	500	6
2261000	1000	6



NEW

227 Wide Mouth Bottle LDPE Sterile

Material : Low Density Polyethylene Leak Proof Individually Packed

Code	Capacity ml	Packing
2270030	30	12
2270060	60	12
2270125	125	12
2270250	250	12
2270500	500	6
2271000	1000	6

111 Wide Mouth Bottle HDPE

Material : High Density Polyethylene Leak Proof

Code	Capacity ml	Packing
1110030	30	12
1110060	60	12
1110125	125	12
1110250	250	12
1110500	500	6
1111000	1000	6





113 Wide Mouth Bottle HDPE Amber

Material : High Density Polyethylene Leak Proof

Code	Capacity ml	Packing
1130030	30	12
1130060	60	12
1130125	125	12
1130250	250	12
1130500	500	6
1131000	1000	6



116 Aspirator Bottle With Stop Cock Medical Grade

Material : Medical Grade PP conforming to USP Class VI, US FDA 21 CFR.. Meets Chemical Registration of TSCA (USA) & DSL (CANADA). Autoclavable.

Code	Capacity Ltr.	Packing
1160005	5	1
1160010	10	1
1160020	20	1
1160021	Spare Stopcock	1

234 Aspirator Bottle With Stop Cock PP

Material : Polypropylene Autoclavable

Code	Capacity lit
2340005	5
2340010	10
2340020	20
2340021	Spare Stopcock

ECONOMIC



106 Narrow Mouth Bottle PP Medical Grade

Material : Medical Grade PP conforming to USP Class VI,US FDA 21 CFR.. Meets Chemical Registration of TSCA (USA) & DSL (CANADA). Autoclavable.

Code	Capacity ml	Packing
1060002	2000	6
1060004	4000	6
1060008	8000	6

230 Narrow Mouth Bottle PP

Material : Polypropylene Autoclavable

Code	Capacity ml	Packing
2300002	2000	6
2300004	4000	6
2300008	8000	6

ECONOMIC

231 Narrow Mouth Bottle LDPE

Material : Low Density Polyethylene

Code	Capacity ml	Packing
2310002	2000	6
2310004	4000	6
2310008	8000	6

ECONOMIC

107 Narrow Mouth Bottle LDPE Medical Grade

Material : Medical Grade LDPE conforming to USP Class VI,US FDA 21 CFR.. Meets Chemical Registration of TSCA (USA) & DSL (Canada). Autoclavable.

Code	Capacity ml	Packing
1070002	2000	6
1070004	4000	6
1070008	8000	6



108 Heavy Duty Vacuum Bottle PP Medical Grade

Material : Medical Grade PP conforming to USP Class VI,US FDA 21 CFR.. Meets Chemical Registration of TSCA (USA) & DSL (CANADA). Autoclavable.

Code	Capacity ml	Packing
1080002	2000	2
1080004	4000	2

232 Heavy Duty Vacuum Bottle PP

Material : Polypropylene Autoclavable

Code	Capacity ml	Packing
2320002	2000	2
2320004	4000	2

ECONOMIC

114 Wide Mouth Bottle With Handle PP

Material : Medical Grade PP conforming to USP Class VI,US FDA 21 CFR.. Meets Chemical Registration of TSCA (USA) & DSL (CANADA). Autoclavable.

Code	Capacity Ltr. / Shape	Packing
1140004	4 Ltr. Round	6
1140005	4 Ltr. Square	6



233 Wide Mouth Bottle With Handle PP

Material : Polypropylene Autoclavable

Code	Capacity Ltr. / Shape	Packing
2330004	4 Ltr. Round	6
2330005	4 Ltr. Square	6

ECONOMIC





CARBOY

- 117. Carboys PP Medical Grade
- 235. Carboys PP
- 118. Carboys LDPE Medical Grade
- 236. Carboys LDPE
- 237. Carboys LDPE Sterile Medical Grade
- 238. Carboys PP Amber Medical Grade
- 119. Carboys Wide Mouth PP Medical Grade
- 239. Carboys Wide Mouth PP
- 120. Carboys Wide Mouth Medical Grade
- 240. Carboys Wide Mouth LDPE
- 121. Carboys With Stop Cock PP Medical Grade
- 241. Carboys With Stop Cock PP
- 122. Carboys With Stop Cock LDPE Medical Grade
- 242. Carboys With Stop Cock LDPE
- 123. Carboys With Tubulation PP Medical Grade
- 243. Carboys With Tubulation PP
- 124. Carboys With Tubulation LDPE Medical Grade
- 244. Carboys With Tubulation LDPE

117 Carboys PP Medical Grade

Material : Medical Grade PP conforming to USP Class VI,US FDA 21 CFR.. Meets Chemical Registration of TSCA (USA) & DSL (CANADA). Autoclavable.

Code	Capacity Ltr.	Packing
1170010	10	1
1170020	20	1

235 Carboys PP

Material : Polypropylene Autoclavable

Code	Capacity Ltr.	Packing
2350010	10	1
2350020	20	1

ECONOMIC



118 Carboys LDPE Medical Grade

Material : Medical Grade LDPE conforming to USP Class VI,US FDA 21 CFR.. Meets Chemical Registration of TSCA (USA) & DSL (Canada). Autoclavable.

Code	Capacity Ltr.	Packing
1180010	10	1
1180020	20	1

236 Carboys LDPE

Material : Low Density Polyethylene

Code	Capacity Ltr.	Packing
2360010	10	1
2360020	20	1

ECONOMIC

NEW 237 Carboys LDPE STERILE Medical Grade

Material : Medical Grade LDPE conforming to USP Class VI,US FDA 21 CFR.. Meets Chemical Registration of TSCA (USA) & DSL (Canada). Autoclavable.

Code	Capacity Ltr.	Packing
2370010	10	1
2370020	20	1



NEW 238 Carboys PP Amber Medical Grade

Material : Medical Grade PP conforming to USP Class VI,US FDA 21 CFR.. Meets Chemical Registration of TSCA (USA) & DSL (CANADA). Autoclavable.

Code	Capacity Ltr.	Packing
2380010	10	1
2380020	20	1

119 Carboys Wide Mouth PP Medical Grade

Material : Medical Grade PP conforming to USP Class VI,US FDA 21 CFR.. Meets Chemical Registration of TSCA (USA) & DSL (CANADA). Autoclavable.

Code	Capacity Ltr.	Packing
1190010	10	1
1190020	20	1



239 Carboys Wide Mouth PP

Material : Polypropylene Autoclavable

Code	Capacity Ltr.	Packing
2390010	10	1
2390020	20	1

ECONOMIC

120 Carboys Wide Mouth LDPE Medical Grade

Material : Medical Grade LDPE conforming to USP Class VI,US FDA 21 CFR.. Meets Chemical Registration of TSCA (USA) & DSL (Canada). Autoclavable.

Code	Capacity Ltr.	Packing
1200010	10	1
1200020	20	1



240 Carboys Wide Mouth LDPE

Material : Low Density Polyethylene

Code	Capacity Ltr.	Packing
2400010	10	1
2400020	20	1

ECONOMIC

121 Carboys with Stopcock PP Medical Grade

Material : Medical Grade PP conforming to USP Class VI,US FDA 21 CFR.. Meets Chemical Registration of TSCA (USA) & DSL (CANADA). Autoclavable.

Code	Capacity Ltr.	Packing
1210010	10	1
1210020	20	1



241 Carboys with Stopcock PP

Material : Polypropylene Autoclavable

Code	Capacity Ltr.	Packing
2410010	10	1
2410020	20	1

ECONOMIC

122 Carboys With Stopcock LDPE Medical Grade

Material : Medical Grade LDPE conforming to USP Class VI,US FDA 21 CFR.. Meets Chemical Registration of TSCA (USA) & DSL (Canada). Autoclavable.

Code	Capacity Ltr.	Packing
1220010	10	1
1220020	20	1



242 Carboys With Stopcock LDPE

Material : Low Density Polyethylene

Code	Capacity Ltr.	Packing
2420010	10	1
2420020	20	1

ECONOMIC

123 Carboys With Tubulation PP Medical Grade

Material : Medical Grade PP conforming to USP Class VI,US FDA 21 CFR.. Meets Chemical Registration of TSCA (USA) & DSL (CANADA). Autoclavable.

Code	Capacity Ltr.	Packing
1230010	10	1
1230020	20	1



243 Carboys With Tubulation PP

Material : Polypropylene Autoclavable

Code	Capacity Ltr.	Packing
2430010	10	1
2430020	20	1

ECONOMIC



124 Carboys With Tubulation LDPE Medical Grade

Material : Medical Grade LDPE conforming to USP Class VI,US FDA 21 CFR.. Meets Chemical Registration of TSCA (USA) & DSL (Canada). Autoclavable.

Code	Capacity Ltr.	Packing
1240010	10	1
1240020	20	1

244 Carboys With Tubulation LDPE

Material : Low Density Polyethylene

Code	Capacity Ltr.	Packing
2440010	10	1
2440020	20	1

ECONOMIC

CONSUMABLES

- 125. Wash Bottle LDPE
- 128. Wash Bottle Single Piece LDPE
- 129. Dropping Bottle LDPE
- 249. Dropping Bottle Euro LDPE
- 131. Conical Flask With Screw Cap PP
- 132. Volumetric Flask With Screw Cap PP
- 133. Volumetric Flask With Screw Cap PP Amber
- 136. Measuring Cylinder Round Base PP
- 135. Measuring Cylinder Hexagonal Base PP
- 139. Beaker Euro PP
- 141. Measuring Jug PP
- 143. Burette Clamp PP
- 144. Funnel With Long Stem PP
- 145. Funnel Separating PP
- 184. Petri Dish PP
- 250. Petri Dish Disposable Sterile PS
- 200. Centrifuge Tube Conical Bottom PP
- 245. Centrifuge Tube Conical Bottom
- 201. Coplin Staining Jar
- 195. Water Bottle For Animal Cage PP / SS
- 194. Animal Cage PP / SS
- 196. Kipps Apparatus PP / PTFE
- 265. Separating Funnel Holder
- 266. Funnel Holder
- 267. Flask Stand

125 Wash Bottle LDPE

Material : Low Density Polyethylene

Code	Capacity ml	Packing
1250125	125	12
1250250	250	12
1250500	500	6
1251000	1000	6

ECONOMIC



129 Dropping Bottle LDPE

Material : Low Density Polyethylene

Code	Capacity ml	Packing
1290060	60	12
1290125	125	12

ECONOMIC

128 Wash Bottle Single Piece LDPE

Material : Low Density Polyethylene

Code	Capacity ml	Packing
1280125	125	12
1280250	250	12
1280500	500	6

ECONOMIC



131 Flask Conical With Screw Cap PP

Material : Polypropylene Autoclavable

Code	Capacity ml	Packing
1310100	100	12
1310250	250	12
1310500	500	6

ECONOMIC



132 Volumetric Flask with Screw Cap PP

Material : Polypropylene Autoclavable

Code	Capacity ml	Packing
1320025	25	6
1320050	50	6
1320100	100	6
1320250	250	6
1320500	500	3
1321000	1000	3

ECONOMIC



133 Volumetric Flask with Screw Cap PP Amber

Material : Polypropylene Autoclavable

Code	Capacity ml	Packing
1330025	25	6
1330050	50	6
1330100	100	6
1330250	250	6
1330500	500	3
1331000	1000	3

ECONOMIC



135 Measuring Cylinder Hexagonal Base PP

Material : Polypropylene Autoclavable

Code	Capacity ml	Packing
1350010	10	24
1350025	25	12
1350050	50	12
1350100	100	12
1350250	250	6
1350500	500	3
1351000	1000	1

ECONOMIC



139 Beaker Euro PP

Material : Polypropylene Autoclavable

Code	Capacity ml	Packing
1390050	50	12
1390100	100	12
1390250	250	12
1390500	500	12
1391000	1000	6
1392000	2000	2
1395000	5000	1

ECONOMIC



141 Measuring Jug PP

Material : Polypropylene Autoclavable

Code	Capacity ml	Packing
1410250	250	12
1410500	500	6
1411000	1000	6
1412000	2000	2

ECONOMIC





136 Measuring Cylinder Round Base PP

Material : Polypropylene Autoclavable

Code	Capacity ml	Packing
1362000	2000	1

ECONOMIC

144 Funnel With Long Stem PP

Material : Polypropylene

Code	Dia mm	Packing
1440035	35	36
1440050	50	36
1440065	65	36
1440075	75	36
1440100	100	12
1440300	300	6

ECONOMIC



249 Dropping Bottle Euro LDPE

Material : Low Density Polyethylene

Code	Capacity ml	Packing
2490060	60	12
2490125	125	12
2490250	250	12

NEW



145 Funnel Separating PP

Material : Polypropylene

Code	Capacity ml	Packing
1450100	100	2
1450250	250	2
1450500	500	2

ECONOMIC

143 Burette Clamp PP

Material : Polypropylene

Code	Type	Packing
1430001	Single	6
1430002	Double	6

ECONOMIC



184 Petri Dish PP

Material : Polypropylene Autoclavable

Code	Dia mm	Packing
1840075	75	12
1840100	100	12

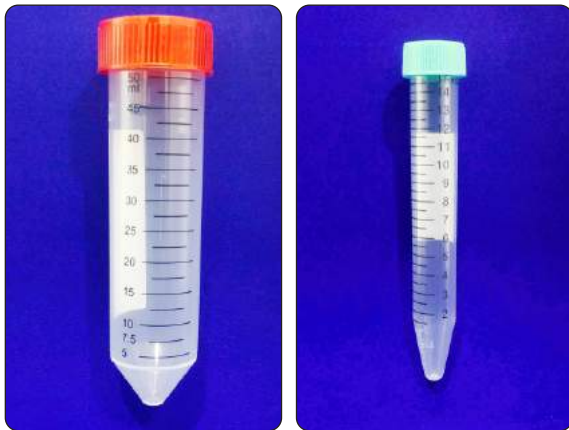
ECONOMIC

250 Petri Dish Disposable STERILE PS

Material : Polystyrene Transparent

Code	Dia mm x ht.	Packing
2500910	90 x 15	Pack of 10
2500901	90 x 15	Individual Pack

NEW



200 Centrifuge Tube Conical Bottom PP

Material : Polypropylene
Tubes are Leak Proof & With Printed Graduation & Writing Patch on the opposite side

Code	Capacity ml	Packing
2000015	15	500
2000050	50	500



245 Centrifuge Tube Conical Bottom STERILE PP Individually Packed

Material : Polypropylene

Tubes are Leak Proof & With Printed Graduation & Writing Patch on the opposite side

Code	Capacity ml	Packing
2450015	15	100
2450050	50	100

NEW



196 Kipps Apparatus PP / PTFE

Material : Polypropylene / Polytetrafluoroethylene

Code	Capacity ml	Packing
1960250	250	1
1960500	500	1
1961000	1000	1

ECONOMIC

201 Coplin Staining Jar

Material : Polypropylene Autoclavable

Code	Places	Packing
2010010	10	12



194 Animal Cage PP / SS

Material : Polypropylene & Stainless Steel

Code	Dimension LXBXH	Packing
1940410	410 x 250 x 150 mm	500
1940260	260 x 200 x 140 mm	500

ECONOMIC

195 Water Bottle for Animal Cage PP / SS

Material : Polypropylene & Stainless Steel

Code	Capacity / Type	Packing
1950125	125 ml Straight Nozzle	12
1950250	250 ml Straight Nozzle	12

ECONOMIC





265 Separating Funnel Holder

Material : Polypropylene PP

Code	Description	Packing
2650001	Single	6

NEW

ECONOMIC



266 Funnel Holder

Material : Polypropylene PP

Code	Description	Packing
2660001	Single	6

NEW

ECONOMIC



267 Flask Stand

Material : Polypropylene PP

Code	Description	Packing
2670001	Single	6

NEW

ECONOMIC



RACKS, STANDS STORAGE BOX

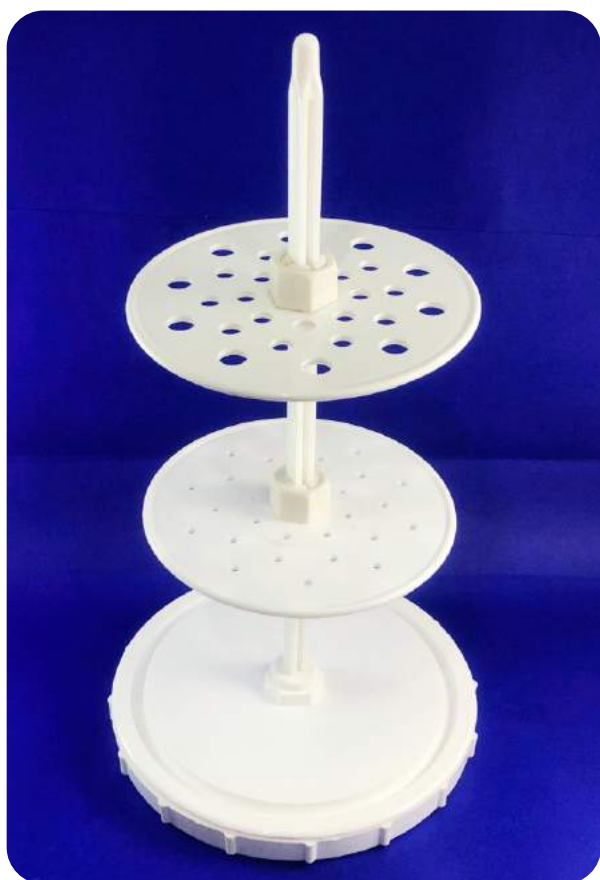
- 142. Retort Stand
- 147. Pipette Stand Vertical (Heavy Base) PP
- 146. Pipette Stand Horizontal PP
- 165. Multi Purpose Combo Rack
- 166. Test Tube Rack PP
- 168. MCT Reversible / Overturn Rack
- 170. Poly Wired Rack
- 171. Conical Centrifuge Tube Rack
- 173. Multi Purpose Storage Box
- 179. Freezer Box 2" Plastic Coated
- 202. Test Tube Stand
- 203. PCR Tube Rack With Lid PP
- 212. Mopingpad Double Coated Foam Based
- 213. Booties Shoe Covers

142 Retort Stand

Material : ABS & MS

Code	Dimensions	Packing
1422215	22cm x 15cm Side Hole	1
1423020	30cm x 20cm Side Hole	1

ECONOMIC



147 Pipette Stand Vertical (Heavy Base) - PP

Material : Polypropylene

Code	Places	Packing
1470028	28	6

ECONOMIC

146 Pipette Stand Horizontal - PP

Material : Polypropylene

Code	Places	Packing
1460012	12	6

NEW SIZES



166 Test Tube Rack - PP

Material : Polypropylene

Code	Size mm / Places	Packing
1661331	13 x 31	2
1661348	13 x 48	2
1661362	13 x 62	2
1661631	16 x 31	2
1661662	16 x 62	2
1662020	20 x 20	2
1662040	20 x 40	2
1662512	25 x 12	2
1662524	25 x 24	2
1661812	18 x 12	2
1661824	18 x 24	2

ECONOMIC



168 MCT Reversible / Overturn Rack

Material : PP

Code	Places	Packing
1680060	60	6
1680096	96	6



170 Poly Wired Rack

Material : PP Very Stable & Corrosion free, will not float in Water Bath Three Tier Design Easy to Assemble Alpha Numeric Identification allows easy Tracing of Tubes Available in 4 Colors Red, Blue, Yellow & white

Code	Places	Packing
1704020	40 Walls # 20 mm Dia	6
1706016	60 Walls # 16 mm Dia	6
1709012	90 Walls # 12 mm Dia	6

171 Conical Centrifuge Tube Rack

Material : PP Easy to assemble, Tubes well secured, wells of 15ml Tube of uptill 17mm Dia & wells for 50ml Tubes uptill 28mm

Code	Description	Packing
1711550	For 15 ml & 50 ml Tubes	1



173 Multipurpose Storage Box

Material : PP Suitable for 1.5ml & 2ml Micro Centrifuge Tubes, Vials & Tubes. Easy to open Hinged Lid, High walls with Air Vents Temperature withstand from -80* C to 120*CAutoclavable uptill 121*CApha Numeric Identification allows easy Tracing of Tubes Fits 100 Tube

Code	Places	Packing
1730100	100 Wells	1



179 Freezer Box 2" Plastic Coated

Made of Card Board-Plastic Coated.
Made from durable cardboard with Plastic laminate outer coating which allows to keep Box moisture free in freezer

Chemically inert to alcohols and mild organic solvents

Temperature range: stable from -196°C to 121°C

Suitable for liquid nitrogen storage

2 inch, 81 well dividers

Holds 0.5ml, 1.5ml or 2.0ml microtubes



Code	Places	Packing
1790081	81 Wells	5

202 Test Tube Stand PP

Material : PP

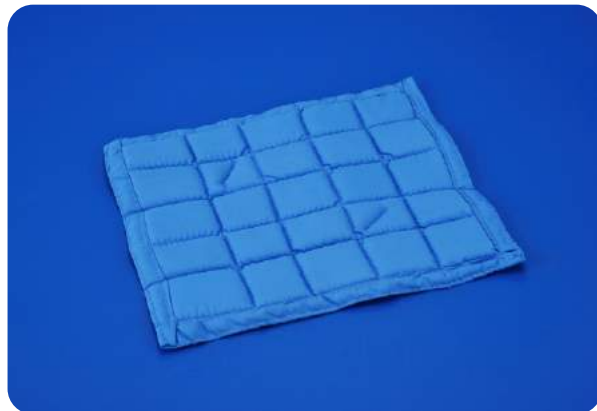
Code	Places	Packing
2020006	6 Tubes	12



203 PCR Tube Rack with Lid PP

Material : PP

Code	Places	Packing
2030096	96	6



212 Moppingpad - Double Coated Foam Based

Material : Lint free Fabric Autoclavable Made up from lint free fabric on both side, having Foam inside which helps to Absorbs spilled Liquids easily. Washable/ Resuable easy to use

Application: Cleaning of equipment, doors, bench etc
Clean room floor Mopping.

Code	Dimensions	Packing
2120001	8.25" x 10.25"	50 Pcs

213 Booties-Shoe Covers

Material : Lint free Fabric Autoclavable Made up from lint free fabric on one side Washable/Reusable, Easy to use

Code	Size	Packing
2130001	Free Size	50 Pcs





LIQUID HANDLING

- 150. Maxipette – Pipette Aid
- 149. Handy Pipette – Pipette Aid
- 151. Serological Pipette Sterile – PS
- 152. Volu Max – Fixed Volume Pipette
- 153. Vari Max – Variable Volume Pipette
- 154. Vari Max Plus Autoclavable
- 155. Micro Tips Universal – PP
- 228. Micro Tips Universal Sterile Individually Packed
- 247. Micro Tips Universal Low Retention
- 156. Micro Tips Box Universal – PP
- 164. Micro Centrifuge Tube
- 157. Solution Reservoir – PP
- 183. Pasture Pipette
- 148. Pipette Controller – PP Silicon
- 169. Pipette Stand For Micro Pipettes
- 214. Indicator tape for Autoclaving
- 215. Tough Tags
- 216. Tough Spots Assorted Color
- 217. Laser Cryo Babies / Cryo Tags
- 218. Cryo Tags & Cryo Babies
- 246. Tough Tag Station
- 220. Petri Seal
- 221. Sample Container
- 222. Ria Vial PP
- 223. Ria Vial Amber
- 224. Ria Vial Transparent PS
- 225. Caps for Ria Vial HDPE
- 219. Nitrile Gloves
- 248. Nitrile Gloves Sterile
- 264. Pipette Bulb
- 268. Parafilm M^R
- 269. Variable Micro Pipette Economic Model
- 270. Fixed Volume Micro Pipette Economic Model
- 271. Magnetic Filter Holder With Funnel

150 Maxipette - Pipette Aid

Code	Capacity ml	Packing
1500100	1-100	1



One can Choose High/Low Speed & in addition adjust the suction with control pressure through Trigger. Dispensing is carried out by pump to drain the pipette with blowing out The Instrument is cosseted with PTFE Filter which blocks any liquid entering the Unit. Filter, Nose Piece & Silicon resin can be effortlessly removed & autoclaved. Environment friendly 3NI-MH Battery allows Approx 2000 Times of Pipetteing Red light indicator signals "It's Time for Recharge"

149 Handy Pipette - Pipette Aid

Material : Polypropylene / Silicon

Code	Capacity ml	Packing
1490002	2	6
1490010	10	6
1490025	25	6



151 Serological Pipette STERILE - PS

Material : Polystyrene

Code	Capacity ml	Packing
1510005	5	250
1510010	10	200



152 Volu Max - Fixed Volume Pipette

Material : Polybutylene terephthalate (PBT), Polycarbonate (PC), Nylon, Stainless

Code	Capacity ul	Model	Packing
1520002	2	KF 2	1
1520005	5	KF 5	1
1520010	10	KF 10	1
1520020	20	KF 20	1
1520025	25	KF 25	1
1520050	50	KF 50	1
1520100	100	KF 100	1
1520200	200	KF 200	1
1520250	250	KF 250	1
1520500	500	KF 500	1
1521000	1000	KF 1000	1
1525000	5000	KF 5000	1



Features of Blancoz Micropipette

Complete range of volumes, from 0.1ul ~ 10000ul, meet all your lab's pipetting needs

Blancoz Pipettes are specially designed and made of Polybutylene Terephthalate (PBT) is a thermoplastic engineering polymer that is used as an insulator in the electrical and electronics industries. It is a thermoplastic (semi-)crystalline polymer, and a type of polyester, making it an excellent choice for work in any biosafety labs. Your staff protection is truly assured. Each pipette comes coated with a special material to prevent heat transfer through handling thereby maximizing accuracy.

Unique shape and ergonomic design

Key internal components are made with metallic materials used in aircraft. The durability, accuracy and stability of your pipette is guaranteed for one year with absolutely no performance deviations in three years. This is our Blancoz guarantee of assurance.

A 360deg lock mechanism which allows both left handed or right handed user to lock volume size at any time .

Each pipette have been tested in the labs in accordance with Q/TFBM02 2002, DIN 12650 standards. Each pipette comes with a certificate highlighting the rigorous tests conducted to ensure performance and consistency.

Each pipette comes with a calibration tool set.

Each pipette weighs only 80g and the spring tension is only 1/3 of most brands of pipette. The ergonomic advantages of our product is easily noticeable during prolong use of pipetting

Applications:

Clinical diagnostic laboratories, biotechnology, Research laboratories, pharmacy and chemistry laboratories, environmental laboratories, food laboratories, mechanical and electrical laboratories etc.

153 Vari Max - Variable Volume Pipette

Material : Polybutylene terephthalate (PBT) , Polycarbonate (PC), Nylon, Stainless Steel & Aluminium

Code	Capacity ul	Model	Packing
1530002	0.1~2ul	KV 2	1
1530010	1~10ul	KV 10	1
1530020	2~20ul	KV 20	1
1530100	10~100ul	KV 100	1
1530200	20~200ul	KV 200	1
1531000	100~1000ul	KV 1000	1
1535000	1000~5000ul	KV 5000	1
15310000	5000~10000ul	KV 10000	1



Specifications			
Cat. No	Volume (µL)	Accuracy (%)	Precision(%)
KV Plus - 2	0.2	±12.0	< 6.0
	1	±5.0	< 2.5
	2	±3.0	< 1.0
KV Plus -10	1	±4.0	< 3.0
	5	±1.0	< 1.0
	10	±1.0	< 0.5
KV Plus - 20	2	±5.0	< 3.0
	10	±1.0	< 1.0
	20	±1.0	< 0.4
KV Plus - 100	10	±2.0	< 1.0
	50	±1.0	< 0.3
	100	±0.8	< 0.3
KV Plus - 200	20	±1.0	< 0.5
	100	±0.8	< 0.3
	200	±0.8	< 0.2
KV Plus - 1000	100	±1.0	< 0.5
	500	±0.8	< 0.3
	1000	±0.7	< 0.2
KV Plus - 5000	1000	±1.0	< 0.3
	2500	±0.8	< 0.3
	5000	±0.6	< 0.2
KV Plus - 10000	1000	±2.0	< 0.4
	5000	±0.8	< 0.3
	10000	±0.4	< 0.2

154 Vari Max PLUS Autoclavable

Material : Polybutylene terephthalate (PBT), Polycarbonate (PC), Nylon, Stainless



Code	Capacity ul	Model	Packing
1540002	0.1~2ul	KV Plus 2	1
1540010	1~10ul	KV Plus 10	1
1540020	2~20ul	KV Plus 20	1
1540100	10~100ul	KV Plus 100	1
1540200	20~200ul	KV Plus 200	1
1541000	100~1000ul	KV Plus 1000	1
1545000	1000~5000ul	KV Plus 5000	1
15410000	5000~10000ul	KV Plus 10000	1

Specifications			
Cat. No	Volume (µL)	Accuracy (%)	Precision(%)
KV Plus - 2	0.2	±12.0	< 6.0
	1	±5.0	< 2.5
	2	±3.0	< 1.0
KV Plus - 10	1	±4.0	< 3.0
	5	±1.0	< 1.0
	10	±1.0	< 0.5
KV Plus - 20	2	±5.0	< 3.0
	10	±1.0	< 1.0
	20	±1.0	< 0.4
KV Plus - 100	10	±2.0	< 1.0
	50	±1.0	< 0.3
	100	±0.8	< 0.3
KV Plus - 200	20	±1.0	< 0.5
	100	±0.8	< 0.3
	200	±0.8	< 0.2
KV Plus - 1000	100	±1.0	< 0.5
	500	±0.8	< 0.3
	1000	±0.7	< 0.2
KV Plus - 5000	1000	±1.0	< 0.3
	2500	±0.8	< 0.3
	5000	±0.6	< 0.2
KV Plus - 10000	1000	±2.0	< 0.4
	5000	±0.8	< 0.3
	10000	±0.4	< 0.2

Blancoz Autoclavable Plus Pipette

Blancoz Plus Pipette are ISO 2001 and ISO14001 certified. Featuring a UV-resistant body, the entire device is fully autoclavable, maintaining accuracy after autoclaving. It no longer needs to be disassembled prior to autoclaving or recalibrated after autoclaving.

Blancoz Pipettes are specially designed and made of Polybutylene Terephthalate (PBT) is a thermoplastic engineering polymer that is used as an insulator in the electrical and electronics industries. It is a thermoplastic (semi-)crystalline polymer, and a type of polyester, making it an excellent choice for work in any biosafety labs. Your staff protection is truly assured. Each pipette comes coated with a special material to prevent

The entire line has been tested by autoclaving nearly 200 times without having to recalibrate a pipette. All models feature a continuously adjustable smooth micrometer rather than a click-stop micrometer. The easy-to-use locking wheel at the top of the handle ensures accuracy and precision during use. All pipettes are calibrated at the factory, and the calibration certificate is included with each. Both single and multichannel lines are available.

Features

Fully autoclavable. (121C for 20 minutes)

Enhanced UV resistance.

Easy digital volume setting.

Easy and convenient single hand locking lever.

Eight sizes to cover a wide volume range. (0.1µL - 10mL)

PTFE (Fluorine resin) is used in the airtight chamber of the instrument, so the instrument keeps its air tightness and precise reproducibility for long hours.

Filtered Nozzles are used for volume models larger than 1000µL.

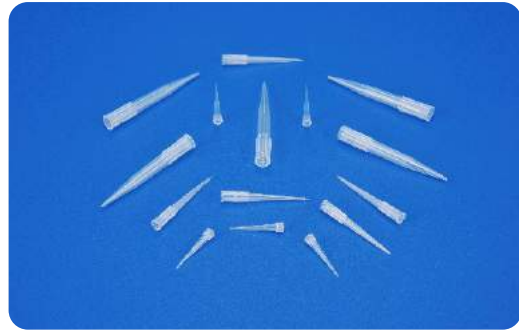
Tip ejector allows tip ejections without touching the tip.

Tip ejector is made of plastic to avoid damaging glass tubes.

155 Micro Tips Universal - PP

Material : Polypropylene
Dnase, Rnase & Pyrogen Free

Code	Capacity ul	Packing
1550010	0.2 ~ 10 ul	1000
1550100	2 ~ 200 ul	1000
1551000	100 ~ 1000 ul	500



228 Micro Tips Universal STERILE Individually Packed

Material : Polypropylene
Dnase, Rnase & Pyrogen Free

Code	Capacity ul	Packing
2280010	0.2 ~ 10 ul	100
2280100	2 ~ 200 ul	100
2281000	100 ~ 1000 ul	100

247 Micro Tips Universal Low Retention

Material : Medical Grade PP Autoclavable
Manufactured in Clean Room :Production
envoirement: ISO class 5 Cleanroom has at
most 10⁵ = 100,000 particles per m³.
Low Retention, Smooth Surface, No Overlap

Code	Capacity ul	Packing
2470010	0.2 ~ 10 ul	1000
2470100	2 ~ 200 ul	1000
2471000	100 ~ 1000 ul	500



156 Micro Tips Box Universal - PP

Material : Polypropylene

Code	Capacity	Places	Packing
1560010	0.2 ~ 10 ul	96	6
1560100	2 ~ 200 ul	96	6
1561000	100 ~ 1000 ul	100	6

ECONOMIC

164 Micro Centrifuge Tube

Material : Polypropylene
Dnase, Rnase & Pyrogen Free

These Graduated Tubes have frosted labeling Surface & can withstand Centrifugation up to 12000 X G. The MCT can be easily & single handedly used with the help of Thumb, can be opened & locked. They have Ultra Smooth Polished Interior surfaces, which won't adhere most Proteins & have High Transparency which helps in better Sample visibility

Code	Capacity ml	Packing
1640010	0.5	1000
1640100	1.5	500
1641000	2	500



157 Solution Reservoir - PP

Material : PP
Angled sides and V-shaped bottom permits easy access to solution

Polypropylene basin is chemically resistant to alcohols and mild organic solvents

Can be used with single or multi-channel pipettors

This dual purpose Polypropylene 12-channel basin can hold 5ml in individual channels, flip it & Can use 50ml volume

Comes in assorted colors: clear, blue, green, red, and yellow

Code	Capacity ml	Packing
1570055	50	12

183 Pasture Pipette

Material : Low Density Polyethylene

Code	Capacity ml	Packing
18300001	1	500
18300003	3	500



148 Pipette Controller - PP Silicon

Pipette Controller present safer & handy filling and dispensing for glass & plastic pipettes from 1ml to 100ml pipettes. Just pull the slide lever when vacuum is desired. An instant switch precisely controls aspiration & dispensing. Disposable in- line pass through a filter prevents contamination.

Code	Capacity ml	Packing
1480100	1-100	1



169 Pipette Stand For Micro Pipettes

Material : PP & Metal

Comes with extra Holder which is universal & can hold any Micro Pipettes.

Code	Holds	Packing
1690001	6 Pipettes	1



214 Indicator Tape for Autoclaving

The autoclave tapes are suitable for steam and Ethylene Oxide Sterilisation Processes and also provide a clean peel from the wrapping material indicates completion of normal Sterilisation

Code	Size W x L	Packing
2142550	25 mm x 50 Mtr.	1 Roll



215 Tough Tags

A Chemically static polyester label robustly sticks on to any plastic and any surface resists from - 40°C to 121°C. without peeling it can withstand autoclaving, boiling water baths, freezer temperatures, organic solvents, caustic agents and any challenges.

Code	Description	L x B mm	Packing
2152413	Tough Tags	24 x 13	1000
2153213	Tough Tags	32 x 13	1000
2150095	Tough Spots	Dia 9.5	1000
2150127	Tough Spots	Dia 12.7	1000

Tough Tags : For specific colour option put the following suffix after the Code No.
W=White, R=Red, G=Green, B=Blue
Tough Spots : For Specific Colour Option Use the suffix after Code No.
W=White, R=Red, G=Green, B=Blue, Y=Yellow, O=Orange

216 Tough Spots Assorted Colour

Code	Description	Packing
2160038	3/8 Tough Spots 5-up Assorted Colour	5000 / Roll
2160012	1/2 Tough Spots 5-up Assorted Colour	5000 / Roll

217 Laser Cryo Babies / Cryo Tags

Code	Description	Packing	Packing
2171285	Laser Cryo Babies	1.28 x 0.50"	1700
2179405	Laser Cryo Babies	0.94 x 0.50"	2380
2171575	Laser Cryo Tags	1.50 x 0.75"	1200
2171690	Laser Cryo Tags	1.69 x 0.75"	1040
2172625	Laser Cryo Tags	2.625 x 1.0"	600



218 Cryo Tags & Cryo Babies

These Labels can withstand predictable & Cryogenic Storage conditions. It can withstand boiling water baths (100°C), autoclaving and moderate oven temperatures (150°C)

TOUGH - Chemically inert labels resist most organic solvents and caustic agents. They adhere to most plastics, glass and metals without cracking, peeling or degrading

Code	Description	L x B mm	Packing
2183313	Cryo Babies	33 x 13	1000
2183819	Cryo Tags	38 x 19	1000

246 Tough Tag Station

Can Hold up to 6 Boxes of Tough Tags/
Tough Spots & Cryo Babies

Code	Packing
2460006	1



220 Petri Seal

CONFORMITY - Stretches, conforms and seals the perimeter of micro plates and Petri dishes

WATERPROOF & CHEMICALLY RESISTANT - Resists most solvents and caustic agents

TEMPERATURE RESISTANT - Seal remains flexible in moderate freezer temperatures and withstands intermittent exposure to 100°C

SIZES - PetriSeal (0.50"), All your sealing needs are covered

Code	Size Inches	Packing
2205108	0.5" x 108"	1 Roll

To specify colour put the following suffix after the Code No.
B=Blue, C=Clear, R=Red, W=White, Y=Yellow

221 Sample Container Sterile / Non Sterile

Material : Polypropylene

Code	Capacity ml	Packing
2210050	50 ml	100
2210051	50 ml Sterile	100
2210030	30 ml	100
2210031	30 ml Sterile	100



222 Ria Vial PP

Material : Made of PP

NEW SIZES

Code	Dimension	Packing
2221275	12 x 75 mm	500
2221240	12 x 40 mm	500

223 Ria Vial Amber

Material : Made of PP

NEW SIZES

Code	Dimension	Packing
2231275	12 x 75 mm	500
2231240	12 x 40 mm	500

224 Ria Vial Transparent PS

Material : Polystyrene

NEW SIZES

Code	Dimension	Packing
2241275	12 x 75 mm	500
2241240	12 x 40 mm	500

225 Caps for Ria Vial HDPE

Material : High Density Polyethylene

Code	Dimension	Colour	Packing
2250100	12 mm	Natural	500
2250101	12 mm	Amber	500

To specify colour put the following suffix after the Code No.
B=Blue, C=Clear, R=Red, W=White, Y=Yellow G= Green



219 Nitrile Gloves

240mm Powder Free, Non Sterile, Ambidxtrous

NEW SIZES

Code	Size	Packing
2190010	Small	100
2190100	Medium	100
2191000	Large	100

Quality Standards

Conforms to ASTM D6319 and EN 455 Standards.
 Manufactured under QSR (GMP), ISO 9001:2008 & ISO 13485:2003 (Medical Device) Quality Management System. Biocompatibility tested or biocompatibility friendly.
 Resists permeation by a wide range of chemicals as compared to natural rubber latex of the same thickness

Functional Benefits

- Protection from unwanted and dangerous substances.
- Beaded cuff ensures easy donning and prevent roll down.
- Superior Strength with better puncture resistance.
- Full textured enhances wet and dry grip.
- Thinner gauger improves tactile sensitivity.
- Custom design enhances comfort and fit
- Provide an alternative solution for individuals who are Allergic to natural rubber latex.



248 Nitrile Gloves Sterile

240mm Powder Free, Non Sterile, Ambidxtrous

Code	Size	Packing
2480010	Small	100
2480100	Medium	100
2481000	Large	100

NEW SIZES

Features Like Standard of Quality & Functional Benefits Same as Product Code 219 Shown above



264 Pipette Bulb

Material : Natural Rubber

NEW SIZES

Code	Pipette Capacity ml	Packing
2640100	Uptil 100ml Pipettes	1



268 Parafilm M®

Self sealing film which can hold moisture loss to the minimum & Protects the contents of Test Tubes, Beakers, Flasks, Petri Dish Vials etc

NEW SIZES

Code	Dimension	Packing
2682250	2" x 250'	1
2684125	4" x 125'	1



269 Variable Micro Pipette Economic Model

NEW SIZES

Code	Dimension	Packing
2690010	0.5~10 ul	1
2690020	0.2 ~ 20 ul	1
2690050	5 ~ 50 ul	1
2690100	10 ~100 ul	1
2690200	20 ~ 200 ul	1
2691000	100 ~ 1000 ul	1
2695000	1000 ~ 5000 ul (1ml ~ 5ml)	1

Popup for 1 year Free Replacement Warranty.
T & C Applicable.

270 Fixed Volume Micro Pipette Economic Model

NEW SIZES

Code	Dimension	Packing
2700005	0.5 ul	1
2700002	2 ul	1
2700005A	5 ul	1
2700010	10 ul	1
2700025	25 ul	1
2700050	50 ul	1
2700100	100 ul	1
2700250	250 ul	1
2700500	500 ul	1
2701000	1000 ul	1
2705000	5000 ul	1

Popup for 1 year Free Replacement Warranty.
T & C Applicable.



271 Rocker Magnetic Filter Holder With Funnel

Material : PES (Polyether Sulfone)

Rocker MF series magnetic filter holders are designed with double-layer magnets to ensure a tight seal between the funnel and support base.

The user-friendly design can allow one-handed operation and prevent possible twisting and tearing of the membrane.

Innovative design of a hose fitting detachable to the support base(PES) material, MF series filter holders can be resistant to a wide range of solvents, sturdy and autoclavable. can allow a direct connection to vacuum source and a flexible use with various kinds of vacuum flask and bottle. Constructed of Polyether sulfone

NEW SIZES

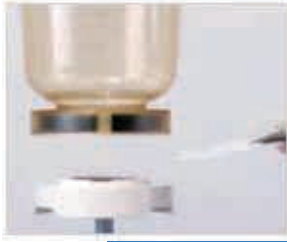
Code	Capacity of Funnel / Model	Packing
2710300	300ml - MF - 3	1
2710500	500ml - MF - 5	1

Technical Specification

Part / Model	MF 3 / MF 3a	MF 5 / MF 5a
Funnel Capacity	300 ml	500 ml
Effective Filtration Area	13.1 cm ²	13.1 cm ²
Effective Diameter	41 mm	41 mm
Filter Size	47 mm	47 mm
Fitting Size (Tubing)	Ø 4 ~ 8 mm	Ø 4 ~ 8 mm
Graduation Increment	50 ml	50 ml
Size (Diameter x H)	Ø 9 x 17 cm / Ø 9 x 10.4cm	Ø 9 x 21.6 cm / Ø 9 x 14.6cm
Packing Size (LxWxH)	19.5 x 10.2 x 10.2 cm	19.5 x 10.2 x 10.2cm
Net Weight	350g / 300g	400g / 350g
Gross Weight	450g / 400g	500g / 450g

Part	Material
Funnel Body	Polyether sulfone
Funnel Base	Polyether sulfone
Hose Fitting	Polyether sulfone
Support Screen	Polyether sulfone
Sealing Gasket	Silicone Rubber
Sealing Plug	Silicone Rubber
Lid Kit	PP (Poly Propylene) Construction with PTFE syring filter





Double - Layer Magnets
One - Handed Operation



Innovative design of a hose fitting
detachable to the support base



Direct connection to vacuum source and a
flexible use with various kinds of vacuum flask, bottle

Benefits:

- ◆ Versatile:
Compatible with various kinds of bottle, vacuum flask with or without side arm to collect filtrate directly
 - ◆ Easy to use:
Strong magnetic seal allows one-handed operation, prevents possible twisting and tearing of the membrane.
Membrane guide on the base helps position membrane easily
 - ◆ Safety:
PES (Polyether sulfone) construction, resistant to a wide range of chemicals and high temperature, sturdy and unbreakable
 - ◆ Reusable:
Withstands numerous autoclave cycles, save money and energy consumption
- Applications
- ◆ Suspended Solid test filtration for municipal, surface, ground and drinking water
 - ◆ Microbiology test filtration in food, pharmaceutical, beverage industries
 - ◆ Medium purification in life science laboratory
 - ◆ General filtration for aqueous sample



DESICCATOR

- 159. Desiccator Plain PC/PP
- 162. Spare "O" Ring For Desiccator
- 160. Desiccator Vacuum PC / PP
- 161. All Clear Desiccator Vacuum PC

159 Desiccator Plain PC/PP

Material : Polycarbonate / Polypropylene

Code	Size	Packing
1590150	150 mm or 6"	1
1590200	200 mm or 8"	1
1590250	250 mm or 10"	1
1590300	300 mm or 12"	1

ECONOMIC

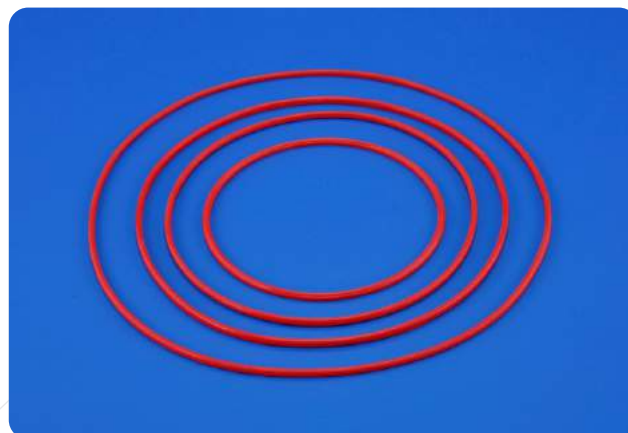


162 Spare "O" Ring for Desiccator

Material : Silicon

Code	Size	Packing
1620150	150 mm or 6"	1
1620200	200 mm or 8"	1
1620250	250 mm or 10"	1
1620300	300 mm or 12"	1

ECONOMIC



160 Desiccator Vacuum PC / PP

Material : Polycarbonate / Polypropylene

Code	Size	Packing
1600150	150 mm or 6"	1
1600200	200 mm or 8"	1
1600250	250 mm or 10"	1
1600300	300 mm or 12"	1

ECONOMIC



161 All Clear Desiccator Vacuum PC

Material : Polycarbonate

Code	Size	Packing
1610150	150 mm or 6"	1
1610200	200 mm or 8"	1
1610250	250 mm or 10"	1
1610300	300 mm or 12"	1

ECONOMIC





PCR RANGE

174. Multi Purpose Micro Tube PP

175. PCR Tube Flat Cap – PP

176. PCR Tube Dome Cap – PP

177. 8 Strip PCR Tube – PP

178. PCR Plates Semi Skirted – PP

180. Inoculating Loop PS – Sterile

181. Inoculating Needles PS – Sterile

182. L Spreader PS – Sterile Individually Packed



174 Multi Purpose Micro Tube Self-Standing PP

Material : PP Conforming to US (FDA) 21CFR Classs VI. Autoclavable. DNase, RNase & Pyrogen Free.

Comes with Screw cap & O Ring, Leak proof

Eventual in applications from sample storage in vapor phase of liquid nitrogen to boiling applications Ideal for almost every long term storage application.

Superior clarity and exceptional strength

Universal screw threads for use

Tubes fit most common rotors

Autoclavable to 121°C and freezable to -181°C

Code	Capacity ml	Packing
1740002	2ml	500



175 PCR Tube Flat Cap - PP

Material : PP Conforming to US (FDA) 21CFR Classs VI. Autoclavable

Temperature range: stable from -20°C to 100°C

Withstands centrifugation of 6,000 RCF in a fully supported rotor

Certified RNase & DNase and Endotoxin Free on a Batch wise basis for highest sample integrity

In addition transparent caps allows RT-PCR applications

Ultra Thin-Wall Tubes offer faster heating and cooling than standard tubes, more proficient heat transfer, and shorter ramping times

Conical bottom design fits most of PCR machines

CAPS DESIGN

Flat cap for easy piercing or labeling *Unique cap design eliminates popping during cycling and incubation stages

Ideal for Real-Time PCR(qPCR)

Code	Capacity ml	Packing
1750002	0.2ml	1000



176 PCR Tube Dome Cap - PP

Made of PP -Non Sterile Autoclavable

Temperature range: stable from -20°C to 100°C

Withstands centrifugation of 6,000 RCF in a fully supported rotor

Certified RNase & DNase and Endotoxin Free on a Batch wise basis for highest sample integrity

In addition transparent caps allows RT-PCR applications

Ultra Thin-Wall Tubes offer faster heating and cooling than standard tubes, more proficient heat transfer, and shorter ramping times

Conical bottom design fits most of PCR machines

CAPS DESIGN

Domed-shaped caps for efficient heat transfer

Ideal for Real-Time PCR(qPCR)

Code	Capacity ml	Packing
1760002	0.2	1000



177 8 Strip PCR Tube - PP

Made of PP -Non Sterile Autoclavable

Temperature range: stable from -20°C to 100°C

Withstands centrifugation of 6,000 RCF in a fully supported rotor

Certified RNase & DNase and Endotoxin Free on a Batch wise basis for highest sample integrity

In addition transparent caps allows RT-PCR applications

Ultra Thin-Wall Tubes offer faster heating and cooling than standard tubes, more proficient heat transfer, and shorter ramping times

Conical bottom design fits most of PCR machines

CAPS DESIGN

Domed-shaped caps for efficient heat transfer

Unique cap design eliminates popping during cycling and incubation stages

Ideal for Real-Time PCR(qPCR)

Code	Capacity ml	Packing
1770082	0.2	250



178 PCR Plate Semi Skirted - PP

Made of PP - Non Sterile

Certified RNase & DNase and Endotoxin Free on a Batch wise basis for highest sample integrity

Temperature range: stable from -20°C to 100°C

Tested to withstand centrifugation of 6,000 RCF in a fully supported rotor

Familiar with most popular 96-well thermal cyclers

Ultra-thin walls of uniform thickness - accelerate heat transfer leading to shorter cycle times and more consistent results.

Alphanumeric well coding available to further assist in sample storage and organization

Clear well bottom for sample visibility

The Semi-skirted plate provides superior rigidity and is easy to insert and extract

The plate has a working volume of 0.2ml per well

Code	Capacity ml	Places	Packing
1780096	0.2 ml	96 Wells	25



180 Inoculating Loop PS - Sterile

Made of Polystyrene High impact polystyrene loops are smooth and flexible to facilitate uniform and smooth streaking without damaging the gel surface.

Packed sterile in safe, tamper proof, zip-seal reseal able bags

The other end of the loops can be used as needles

Freedom from lubricants, oils and electrostatic charges enables consistent wetting and complete liquid transfer

25 Pieces per bag keep them safe from contamination and easy to be used.

25 pieces pack includes one hard paper with product guideline For better use of product. The bag can be resealed

Code	Capacity ul	Packing
1800001	Soft Loop - 1 ul	100 (Pouch of 25)
1800010	Soft Loop - 10 ul	100 (Pouch of 25)



181 Inoculating Needles PS - Sterile

Made of Polystyrene *High impact polystyrene needles are smooth and flexible to facilitate uniform and smooth streaking without damaging the gel surface.

Needles are straight and suitable for removal of specimens of single colonies

Packed sterile in safe, tamper proof, zip-seal reseal able bags

Freedom from lubricants, oils and electrostatic charges enables consistent wetting and complete liquid transfer

Needles are ideal for the removal of single colonies

PACKAGING

25 Pieces per bag keep them safe from contamination and easy to be used

25 pieces pack includes one hard paper with product guideline For better use of product. The bag can be resealed

Code	Description	Packing
1810001	Innoculation Needle	100 (Pouch of 20)



182 L Spreader PS - Sterile Individually Packed

Made of Polystyrene Ideal for even spreading of bacterial cultures

Disposable

Smooth spreading surface with slight upward angle

Individually wrapped which keep them safe

L-shape allows application on the entire Petri dish or plate surface

Pre-sterilized

Code	Description	Packing
1820001	L-Spreader	50



EU Plastic Regular Polymerase Chain Reaction (PCR) Compatibility Chart

Manufacturer	Model	Wells	EU Singles	EU Eighters	EU Plates 96	EU Plate 384
			B79401 B79001	B79901 C79601 B79201	B70651 B70501 Ab17500	B70515
Biometra	Uno	24/48/96	YES YES	YES YES YES	YES YES YES	YES
	Uno II	24/48/96/348	YES YES	YES YES YES	YES YES YES	YES
	Tpersonal	48	YES YES	YES YES YES	NO NO NO	NO
	TI (plus)	96/384	YES YES	YES YES YES	YES YES YES	YES
	T Gradient	96/384	YES YES	YES YES YES	YES YES YES	YES
	T3	48	YES YES	YES YES YES	NO NO NO	NO
	Trobot	96/384	YES YES	YES YES YES	YES YES YES	YES
Biometra	Gene Cyclor	24	YES YES	YES YES YES	NO NO NO	NO
	iCyclor	48/96/384	YES YES	YES YES YES	YES YES YES	YES
	My Cyclor	96	YES YES	YES YES YES	YES YES YES	NO
Eppendorf	Mastercycler	96/384	YES YES	YES YES YES	YES YES YES	YES
	Mastercycler Personal	25	YES YES	NO NO NO	NO NO NO	NO
MJ Research	PTC-150	25	YES YES	NO NO NO	NO NO NO	NO
	PTC-100	96	YES YES	YES YES YES	YES YES YES	NO
	PTC-200	48/96/384	YES YES	YES YES YES	YES YES YES	YES
	PTC-221	48/96/384	YES YES	YES YES YES	YES YES YES	YES
	PTC-220	48/96/384	YES YES	YES YES YES	YES YES YES	YES
	PTC-225	48/96/384	YES YES	YES YES YES	YES YES YES	YES
MWG	Primus 25	25	YES YES	NO NO NO	NO NO NO	NO
	Primus 96	96	YES YES	YES YES YES	YES YES YES	NO
	Primus 384	384	NO NO	NO NO NO	NO NO NO	YES
	Primus HT Dualblock	96/384	YES YES	YES YES YES	YES YES YES	YES
	Primus Multiblock	96/384	YES YES	YES YES YES	YES YES YES	YES
ABI	PE-2400	24	YES YES	YES YES YES	NO NO NO	NO
	PE-9600	96	YES YES	YES YES YES	YES YES YES	NO
	PE-2700/2720	96	NO YES	YES YES YES	YES YES YES	NO
	PE-9700	96/384	NO YES	YES YES YES	YES YES YES	YES
	PE-9800	96	NO NO	NO NO NO	NO NO NO	NO
Techne	Genius	96/384	YES YES	YES YES YES	YES YES YES	YES
	Touch Gene	96/384	YES YES	YES YES YES	YES YES YES	YES
	FlexiGene/Flexi Quad	96/384	YES YES	YES YES YES	YES YES YES	YES
	ProGene	25	YES YES	NO NO NO	NO NO NO	NO
	TechGene	25/96	YES YES	YES YES YES	YES YES YES	NO
	Gene-E	96	YES YES	YES YES YES	YES YES YES	NO
	TC-312	25	YES YES	NO NO NO	NO NO NO	NO
TC-412	96	YES YES	YES YES YES	YES YES YES	YES	

EU Plastic Regular Polymerase Chain Reaction (PCR) Compatibility Chart

Manufacturer	Model	Wells	EU Singles	EU Eighters	EU Plates 96	
	Tc-512	96/384	YES YES	YES YES YES	YES YES YES	YES
Thermo	PxE	96/384	YES YES	YES YES YES	YES YES YES	YES
	OmniGene	96	YES YES	YES YES YES	YES YES YES	YES
	PCR Express	48/96/384	YES YES	YES YES YES	YES YES YES	YES
	OMN-E	96	YES YES	YES YES YES	YES YES YES	NO
	TouchDown	48/96	YES YES	YES YES YES	YES YES YES	NO
	Px2	96/384	YES YES	YES YES YES	YES YES YES	YES
	PCR sprint	24	YES YES	YES YES YES	NO NO NO	NO
	MBS	96/384	YES YES	YES YES YES	YES YES YES	YES
	MBSR	96/384	NO NO	YES YES YES	YES YES YES	YES
Stratagene	Robo-cycler	96	NO NO	YES YES YES	YES YES YES	NO
Corbett Research	Palm Cycler	96/384	YES YES	YES YES YES	YES YES YES	YES

EU Plastic Real-Time PCR Compatibility Chart

Manufacturer	Model	Wells	EU Singles	EU Eighters	EU Plates 96	
			B79001 B79401	B79901 C79601 B79201	B70651 B70501 Ab17500	B70515
Biorad	iCycler iQ system	96	YES NO	YES YES YES	YES YES YES	NO
	MyiQ system	96	YES NO	YES YES YES	YES YES YES	NO
Mj Research	Option	96	NO NO	NO NO NO	NO NO NO	NO
	Option 2	96	NO NO	NO NO NO	NO NO NO	NO
	Option 4	96	YES NO	YES YES YES	YES YES YES	NO
ABI	PE 5700	96	YES NO	YES YES YES	YES YES YES	NO
	PE 7700	96	YES NO	YES YES YES	YES YES YES	NO
	ABI 7000	96	YES NO	YES YES YES	YES YES YES	NO
	ABI 7900	96/384	NO NO	NO NO NO	NO NO NO	YES
	ABI 7300	96	YES NO	YES YES YES	NO YES YES	NO
	ABI 7500	96	YES NO	YES YES YES	NO YES YES	NO
	ABI 9800	96	NO NO	NO NO NO	NO NO NO	NO
Techne	Quantica	96	YES NO	NO NO NO	NO NO NO	NO
Stratagene	MX3000P	96	NO NO	NO YES NO	YES YES NO	NO
	Mx4000	96	NO NO	NO YES NO	YES YES NO	NO
Corbett Research	Rotorgene	36	YES NO	NO NO NO	NO NO NO	NO
Bioer	Line-Gene-FQD	33	YES NO	NO NO NO	NO NO NO	NO

Yes Fits the selected thermal cycler brand/type No Does not fit the selected thermal cycler brand/type

Trademarks : All mentioned cycler brand names are trademarks of the corresponding companies, BIO plastic, EU BIO-seal, Opti-Seal are trademarks of BIO plastics, The Netherlands.



PTFE WARE

- 186.** Magnetic Retrievers & Rescues
- 187.** Coated Magnetic Bars Cylindrical Shape
- 188.** Coated Magnetic Needle Oval Shape
- 189.** Coated Magnetic Bar- Cross Head Shape
- 190.** Coated Magnetic Bar- Star Shape
- 191.** Coated Magnetic Bars - Dumbbell Shape
- 192.** Coated Magnetic Bars - Octagonal
- 193.** Coated Magnetic Micro Bars
- 252.** Polygon Magnetic Bars
- 253.** Stuffing Box
- 254.** Blades - Stirrer
- 255.** Beakers
- 256.** Lid for Beakers
- 257.** Crucibles
- 258.** Lids for Crucibles
- 259.** Wide Mouth Bottles

Demerit for selection & use of Blancoz Stirring Bars

Magnetic Stirring bars, also known as Rotors, Paddles & Followers etc, consist of Magnets encapsulated in PTFE through Moulding. PTFE in Chemistry is known as polytetrafluoroethylene (PTFE) is a synthetic fluoropolymer which finds numerous applications. PTFE's most well known trademark in the industry is the Dupont brand name Teflon PTFE has an extremely low coefficient of friction is very non-reactive, and so is often used in containers and pipework for reactive and corrosive chemicals. Where used as a lubricant, PTFE significantly reduces friction, wear and energy consumption of machinery. PTFE is a white solid at room temperature, with a density of about 2.2 g/cm³. According to DuPont its melting point is 327 C (620.6 F), but its properties degrade above 260 C (500 F). It's non toxic, chemically inert & non combustible.

Selecting Blancoz Magnetic Stirring bars of a proper size & shape can assure good stirring results. Though there are many factors such as shape of vessel, gumminess of solution & turbulence which can affect the stirring process of the solution. For most advantageous competence, Blancoz Stirring bars should be placed directly over the centre of the drive magnet. The distance between the Magnetic Poles of the drive magnet & the length of stirring bar should be equal for the best magnetic intermingle. Speed of Motor of the stirrer should be gradually increased to get the best results. The shape of Bar has strong influence on the resulting whirlpool. To pop in & confiscate the bars in & from the solution, use Blancoz Magnetic Rescuer or Retriever.

Blancoz Magnetic bars are technically advanced with high Magnetic Strength, flawless & fine finishing which makes it one of the best available in the Market. Blancoz is swollen with pride to instigate the said range of stirring Bars.



186 Magnetic Retrievers & Rescues

Material : PTFE Cylindrical permanent magnet sealed at the end for removal or inserting of bars.

NEW SIZES

Code	Length mm	Packing
1860150	150	1
1860200	200	1
1860250	250	1
1860300	300	1
1860450	450	1
1860600	600	1



187 Coated Magnetic Bars Cylindrical Shape

Material : PTFE

Code	Size mm	Packing
1870508	5 x 8 mm	12 Pcs
1870510	5 x 10 mm	12 Pcs
1870612	6 x 12 mm	12 Pcs
1870618	6 x 18 mm	12 Pcs
1870625	6 x 25 mm	12 Pcs
1870630	6 x 30 mm	12 Pcs
1870715	7 x 15 mm	12 Pcs
1870920	9 x 20 mm	12 Pcs
1870925	9 x 25 mm	12 Pcs
1870930	9 x 30 mm	12 Pcs
1870935	9 x 35 mm	12 Pcs
1871040	10 x 40 mm	6 Pcs
1871045	10 x 45 mm	6 Pcs
1871050	10 x 50 mm	3 Pcs
1871060	10 x 60 mm	3 Pcs
1871075	10 x 75 mm	3 Pcs
1871335	13 x 35 mm	3 Pcs
1871350	13 x 50 mm	3 Pcs
1871375	13 x 75 mm	3 Pcs



188 Coated Magnetic Needle Oval Shape

Material : PTFE

Code	Size mm	Packing
1880408	4 x 8 mm	12 Pcs
1880510	5 x 10 mm	12 Pcs
1880615	6 x 15 mm	12 Pcs
1881020	10 x 20 mm	12 Pcs
1881225	12 x 25 mm	12 Pcs
1881630	16 x 30 mm	12 Pcs
1881635	16 x 35 mm	12 Pcs
1882040	20 x 40 mm	3 Pcs
1882050	20 x 50 mm	3 Pcs
1882064	20 x 64 mm	3 Pcs
1882070	20 x 70 mm	3 Pcs



189 Coated Magnetic Bar - Cross Head Shape

Material : PTFE

Code	Size mm	Packing
1891010	10 x 10 mm	6 Pcs
1892020	20 x 20 mm	6 Pcs
1892525	25 x 25 mm	6 Pcs
1893030	30 x 30 mm	6 Pcs
1893838	38 x 38 mm	6 Pcs



190 Coated Magnetic Bar - Star Shape

Material : PTFE Unique shape used for small vessels to give peak & base assures complete stimulation. effective stirring action, four blades impeller gives round water act, fins at effective stirring action, it's four bladed

Code	Size mm	Packing
1901010	10 x 10 mm	6 Pcs
1901412	14 x 12 mm	6 Pcs
1901713	17 x 13 mm	6 Pcs
1902215	22 x 15 mm	6 Pcs



191 Coated Magnetic Bars - Dumbbell Shape

Material : PTFE Unique shape used for small vessels to give peak & base assures complete stimulation. effective stirring action, four blades impeller gives round water act, fins at effective stirring action, it's four bladed



Code	Size mm	Packing
1913220	9 x 32 x 20	3 Pcs
1915220	9 x 52 x 20	3 Pcs

192 Coated Magnetic Bars Octagonal

Material : PTFE Moulded with spin around Ring, the said Octagonal Bars have angular surface which form strong commotion contrast to Cylindrical Shape



Code	Size mm	Packing
1920513	5 x 13	12 Pcs
1920615	6 x 15	12 Pcs
1920720	7 x 20	12 Pcs
1920825	8 x 25	12 Pcs
1920830	8 x 30	12 Pcs
1920928	9 x 28	12 Pcs
1920935	9 x 35	12 Pcs
1920950	9 x 50	6 Pcs
1921040	10 x 40	6 Pcs
1921080	10 x 80	6 Pcs

193 Coated Magnetic Micro Bars

Material : PTFE . It's most excellent to use in small sample stirring of liquid. It can also be used in Cells of Spectrophotometers



Code	Size mm	Packing
1930306	3 x 6	12 Pcs
1930308	3 x 8	12 Pcs

252 Polygon Magnetic Bars

Material : PTFE

NEW SIZES

Code	Size mm	Packing
2520610	6 x 10	6
2520814	8 x 14	6
2520822	8 x 22	6
2520830	8 x 30	6
2520840	8 x 40	6
2520850	8 x 50	6
2520860	8 x 60	6



253 Stuffing Box

Material : PTFE

Stuffing Box Glands Come With cap having shaft dia from 6 to 19mm

NEW SIZES

Code	Size	Shaft Dia	Packing
2530014	B14	6	1
2530019	B19	8	1
2530024	B24	8/10	1
2530029	B29	8/10	1
2530034	B34	8/10	1
2530040	B40	8/10	1
2530045	B45	10/12	1
2530050	B50	10/12	1
2530055	B55	10/12	1



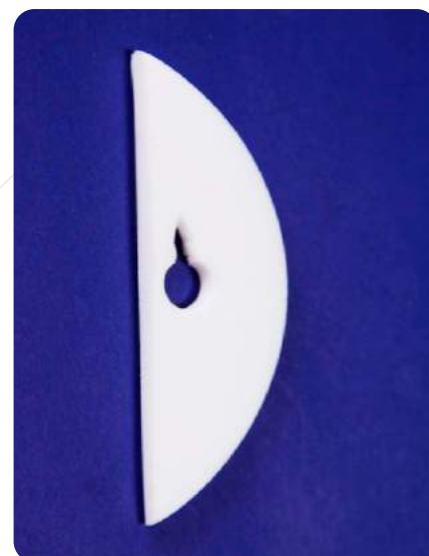
254 Blades - Stirrer

Material : PTFE

Stirrer Blades Moon Shaped with long groove key hole for glass stirrer shafts.

NEW SIZES

Code	Size mm	Thickness	Bore	Socket	Capacity ml	Packing
2544020	40 x 20	3.0	6	24/29	50	1
2545020	50 x 20	3.0	10	24/29	100	1
2547520	75 x 20	3.0	10	24/29	500	1
2547525	75 x 25	3.0	10	29/32	500	1
2547530	75 x 30	3.0	10	34/39	500	1
25410020	100 x 20	3.0	10	24/29	2000	1
25410025	100 x 25	3.0	10	29/32	2000	1
25410030	100 x 30	3.0	10	34/39	2000	1
25412530	125 x 30	4.0	10	34/39	2000	1
25415030	150 x 30	5.0	10	34/39	5000	1
25417530	175 x 30	5.0	10	34/39	10000	1
25420050	200 x 50	6.0	10	55/44	10000	1



255 Beakers

Material : PTFE

Made of PTFE tall shape, griffon with spout, unbreakable, Resistant against all chemicals except molten metal's and fluoride, smooth surface non contamination and particularly valuable for critical laboratory operation even at elevated temperatures made upto 275°C

NEW SIZES

Code	Capacity ml	Packing
2550001	1	1
2550003	3	1
2550005	5	1
2550010	10	1
2550025	25	1
2550050	50	1
2550100	100	1
2550150	150	1
2550250	250	1
2550400	400	1
2550500	500	1
2550600	600	1
2551000	1000	1
2552000	2000	1
2555000	5000	1



256 Lid For Beakers

Material : PTFE

NEW SIZES

Code	Capacity ml	Packing
2560001	1	1
2560003	3	1
2560005	5	1
2560010	10	1
2560025	25	1
2560050	50	1
2560100	100	1
2560150	150	1
2560250	250	1
2560400	400	1
2560500	500	1
2560600	600	1
2561000	1000	1
2562000	2000	1
2565000	5000	1



257 Crucibles

Material : PTFE

NEW SIZES

Code	Capacity ml	Packing
2570015	15	1
2570025	25	1
2570050	50	1
2570080	80	1
2570100	100	1



258 Lids for Crucibles

Material : PTFE

NEW SIZES

Code	Capacity ml	Packing
2580015	15	1
2580025	25	1
2580050	50	1
2580080	80	1
2580100	100	1

259 Wide Mouth Bottles

Material : PTFE

PTFE wide mouth bottles, sturdy strong wall design including screw closure.

NEW SIZES

Code	Capacity ml	Packing
2590025	25	1
2590050	50	1
2590100	100	1
2590250	250	1
2590500	500	1
2591000	1000	1
2592000	2000	1

INSTRUMENTS

- 260. Rocker Vaccum Pump
- 261. Rocker Oil Free Air Compresor
- 262. Chemker Chemically Inert vaccum Pump
- 263. Rocker vane Vaccum Pumb with moist Filter
- 158. Vortit - Votex Shaker
- 163. Fugit - High Speed Centrifuge - 15000RPM
- 185. Stirrit - Mini Flat Magnetic Stirrer
- 197. "Fugeit" Mini Centrifuge 7200 RPM
- 198. "Fugeit" Mini Centrifuge 10000 RPM
- 199. "Vortit" Vortex Shaker
- 204. Vertical Page Electrophoresis System (Molded)
- 205. Submarine Electrophoresis System
- 206. Gel Casting Sytem - Vertical
- 207. Western Blotting (Transfer) System
- 208. Semi Dry Blotting System
- 209. Power Supply Versatile - Digital
- 210. Transiluminator - Research
- 211. DancingShaker (Gel Rocker)

260 Rocker Vacuum Pump

Rocker Vacuum Pump are Oil Free & is powered by Piston Comes with Moisture Trap & Vacuum regulator Suitable for Liquid Filtration & also appropriate for stack or ambient Gas sampling

NEW SIZES

Code	Model	Packing
2600300	Rocker 300	1
2600400	Rocker 400	1
2600410	Rocker 410	1
2600430	Rocker 430	1
2600801	Rocker 801	1
2600811	Rocker 811	1



Do Not Use any Corrosive chemicals like Acids, Alkalies & Organic Air See that No material or Liquid sucks down the pump which can cause serious damage to the pump.

- Light & Compact Because Of Aluminium Die Cast Body
- Free Of Air Pollution, No Lubricants
- Clean & Maintenance Free, Safe
- Good For Liquid Filtration In Microbiology
- Good For Suspended Solid Test & Air Sampling



Specification	Rocker 300	Rocker 400	Rocker 410
Power	220V / 50hz	220V / 50hz	220V / 50hz
Max Power (W)	60 W	80	80
Max Vacuum	-670mm/Hg	-680mm / Hg	-735mmHg
Max Flow Rate	181/min	341 / min	201 / min
Motor Rotation	1450 RPM	1450 RPM	1450 RPM
Horse Power	1/8 HP	1/6 HP	1/6 HP
Net Wt	5 Kg	5.2 kg	5.2 Kg
Port Thread	5/16" (8mm)	5/16" (8 mm)	5/16" (8mm)
Noise Level	50 db	52 db	52 db
Dimension (L X W X H)	26.8 x 13.5 x 20.4 cm	31 x 13.5 x 20.4 cm	31 x 13.5 x 20.4cm

Rocker is Brand Name of Rocker Scientific Co. Ltd - Taiwan

261 Rocker Oil Free Air Compressor

Rocker Compressor are Oil Free & is powered by Piston
 Suitable for agitation in Ferment Tank, Aeration Test
 & Bubble Test

NEW SIZES

Code	Model	Packing
2610320	Rocker Compressor 320	1
2610420	Rocker Compressor 420	1
2610440	Rocker Compressor 440	1

- Light & Compact Because Of Aluminium Die Cast Body
- Free Of Air Pollution, No Lubricants
- Clean & Maintenance Free, Safe



Specification	Rocker 300	Rocker 400	Rocker 410
Max Power (W)	85 W	125 W	125 W
Max Current (A)	04. A	0.6 A	0.6 A
Max Pressure	100 psi (W/O Moisture Trap)	100 psi (W/O Moisture Trap)	40 psi (W/O Moisture Trap)
	80 psi (With Moisture Trap)	80 psi (With Moisture Trap)	60 psi (With Moisture Trap)
Max Flow Rate	12 l/min	25 l/min	25 l/min
Motor Rotation	1400 RPM	1400 RPM	1400 RPM
Horse Power	1/6 Hp	1/6 Hp	1/6 Hp
Noise Level	52 db	52 db	52 db
Port Thread	5/16" (8mm)	5/16" (8mm)	5/16" (8mm)
Net Weight	4.1 Kg	5.2 Kg	8.4 Kg
Dimensions	27.2 x 13.6 x 16.5 Cm	29.8 x 14.3 x 17.2 cm	29.3 x 31.1 x 25.1 cm

Rocker is Brand name of Rocker Scientific Co. Ltd. (Taiwan)

262 Chemker Chemically Inert Vacuum Pump

All wetted parts are made of PTFE to resist corrosive gas Driven by Diaphragm makes it lubricant/pollution & maintenance free. Motor is driven w/o Belt Transmission making the lowest noise level compare to other Vacuum Pumps With Built-in Thermal Protection the pump shut offs automatically when Overheated & Turns ON when temperature cools down Can be used with Gel Drying, Vacuum Concentrators, Vacuum Ovens, Distillation & Rotary Evaporation Instruments

NEW SIZES

Code	Model	Packing
2620300	Chemker 300	1
26220400	Chemker 400	1
2620410	Chemker 410	1



Run the Pump for atleast 2 mints after the operation to draw clean Air, this will help to prolong the Pump Life.

- Light Weight & Compact. Diaphragm
- makes it Corrosive gas resistance
- Oil & Maintenance Free



Specification	Rocker 300	Rocker 400	Rocker 410
Power	220V / 50hz	220V/ 50hz	220V / 50hz
Max Power (W)	60 W	90 W	90
Max Current	0.32 A	0.5 A	0.5 A
Max Vacuum	-670MM/Hg	-670mm /Hg	-750 mmHg
Max Flow Rate	181 / Min	33 1/min	181/min
Motor Rotation	1450 RPM	1450 RPM	1450 RPM
Horse Power	1/8 HP	1/6 HP	1/6 HP
Net Wt	5 Kg	7 Kg	7 Kg
Port Thread	5/16" (8mm)	5/16" (8 mm)	5/16" (8 mm)
Noise Level	50 db	50 db	50 db
Dimension (L X W X H)	20.3 x 11.2 X 20.9 Cm	26.7 x 11.2 x 18.1 Cm	26.2 x 14.8 x 18.2 Cm

Chemker Series of Products belongs to Rocker Scientific Co. Ltd (Taiwan)

263 Rocker Vane Vacuum Pump with Mosit Filter

This Pump has High vacuum & high Flow rate Tanker Series are driven by Rotary Vane with High Flow. Vacuum can reach over 0.1 Torr Suitable for Labs that needs High/Medium volume & vacuum for drying & Centrifugal Concentrators

NEW SIZES

Code	Model	Packing
2630130	Tanker 130	1
2630150	Tanker 150	1
2630215	Tanker 215	1

- Light Weight & Compact. Lowest Vibration
- Best For High Volume & High/Medium Vacuum Application



Specification	Rocker 300	Rocker 400	Rocker 410
Power	220V / 50hz	220V / 50hz	220V / 50hz
Max Power (W)	250 W	375 W	250 W
Max Current	2.5 A	3 A	3.5 A
Max Vacuum	0.1 Torr	0.1 Torr	0.05 Torr
Max Flow Rate	70 L/min	127 L/min	36 L/min
Motor Rotation	1440 RPM	1440 RPM	1440 RPM
Horse Power	1/3 HP	1/2 HP	1/3 HP
Net Wt	9.6 Kg	13 Kg	11.4Kg
Port Thread	3/8" (9.5mm)	3/8" (9.5mm)	3/8" (9.5mm)
Noise Level	52 db	52 db	52 db
Dimension (L X W X H)	31.4 x 12.2 x 25.6 cm	33.5 x 12.5 x 37.5 Cm	31.5 x 12.2 x 36 Cm

Rocker is Brand name of Rocker Scientific Co Ltd. (Taiwan)



Rocker 430



Chemker 410



Rocker 440

158

Vortit - Vortex Shaker

Small footprint and compact structure

Touch function

Fixed speed of 3000rpm

Orbital diameter of 5.5mm

Patented design of foot pad can hold the vortex mixer firmly in place when in mixing

Full containers of 50ml can be activated for mixing within 5 seconds

Power supply has been CE, cULus, CCC, SAA,

FCC and GS certified

Code	Description	Packing
158000V	Vortit KB01 with Speed Control	1

Specification	
Model	158000V
Rated voltage (V AC)	100-240
Rated frequency (Hz)	50-60
Output voltage (V DC)	12
Output Power (W)	7.2
Speed (1/min)	3000
Operating time (%)	100
Protection class	II
EN 60529 protection class	IP 42
Ambient humidity (relative) (%)	80
Ambient temperature (°C)	-25 to +70
Transport temperature (°C)	-10 to +70
Weight (kg)	0.55
Test tube size (mm)	e30
Dimensions (mm)	100 x 78
Type of movement	Orbital
Orbital diameter [mm]	5.5
Touch function	Yes



163

Fugit - High Speed Centrifuge - 15000RPM

LED easy-to-read display and sound alerts

Powerful centrifugal force of 15100 x g and Max. speed of 15000rpm

Brushless DC motor

High speed accuracy of + 20rpm

High safety and reliability thanks to motor-driven lid locking system

Explosion-proof and enclosed steel structure for full protection

Dedicated digital wheels to adjust speed and timing

Both RPM and RCF can be adjusted and displayed

Both aluminum alloy and plastic rotor available and rotor capacity : 1.5/2.0/0.2/0.5ml x 12

Continuous operation or timed operation from 30 seconds to 999 minutes

Automatic lid open upon running completion

Timer starts when the unit reaches the set speed

PULSE offers quick spins

Code	Description	Packing
163000C	Fugit-High Speed Micro Centrifuge	1

Specification	
Model	163000C
Max.speed [rpm]	15000rpm (500-15000rpm),increment:100rpm
Max. RCF [xg]	15100xg, increment:100xg
Speed accuracy [rpm]	±20rpm
Rotor capacity	0.2ml/0.5ml/1.5ml/2mlx12
Run time	30sec-999min-HOLD (Continuous operation)
Driving motor	Brushless
Safety devices	Door interlock, Over-speed detection; Over-temperature detection; Automatic internal diagnosis
Power	Single-phase,AC110V-240V,50Hz/60Hz,3A
Noise level [dB]	≤ 60
Acceleration/Braking time [Sec]	25s á 25s á
Dimensions [mm]	256 x 225 x 155
Weight	6kg
Additional features	Speed/RCF switch; Short-time run function; sound-alert function
Orbital diameter [mm]	5.5
Touch function	Yes



Specification	
Model	18500MS
Rated voltage (V AC)	100-240
Rated frequency (Hz)	50-60
Output voltage (V DC)	12
Output Power (W)	Min.3
Magnetic stirrer	coil drive
Speed range (rpm)	150-1500
Stirred quantity (max) (ml)	800
Operating time (%)	100
Protection class	II
Pollution degree	2
Overvoltage category	II
EN 60529 protection glass	IP 65
Ambient humidity (relative) (%)	80
Ambient temperature (*C)	5 to 40 (in the operation)
Transport temperature (*C)	-25 to +70
Storage temperature (*C)	-10 to +70
Material	Front members sheet polyester
Weight (kg)	0.35
Installed weight (max) (kg)	2
Set-up surface (mm)	e100
Dimensions (W x D x H) (mm)	115 x 175 x 12

185

STIRRIT - Mini Flat Magnetic Stirrer

Features : Speed range of 150-1500 rpm.

High IP protection class (IP 65).

Automatic reverse rotation for better mixing performance.

Set-up plate and casing made from chemically resistant materials.

Slip-proof and stable stand

Code	Description	Packing
18500MS	STIRRIT - Mini Flat Magnetic Stirrer	1



197

“FUGEIT” Mini Centrifuge 7200 RPM

Mini In size & Max in Function

Easy Operation (No Switch to mess with)

Interchangeable Tube & PCR Strip Tube Rotors

Simply Close the lid to start & press the Tab to open

Starts & stops in seconds

Maximum Centrifuge speed 7200 RPM

Code	Packing	Price / Pack
1977200	1	12100

Parameters

Maximum speed 7200 rpm

Maximum RCF : 2350 X g

Capacity/Rotors: Total 2 rotors : 1 for 1.5ml X 6 tubes & 1 for 8 strip X 2

Dimensions : W X D X H 142 X 150 X 102 MM

Weight : 1.5 Kg

Electrical : 85~245 V

Suffix “B” after code for bulk pack



198 "FUGEIT" Mini Centrifuge 10000 RPM

Model : "Spinning"

Micro processor controlled, Micro-Centrifuge machine
(Mini Centrifuge) speed 1000 to 10000 r.p.m.

Technical Specifications

R.P.M. in step of 1000 rpm. Fitted with 0-15 minute electronic digital timer. Supply completed with 2 standard rotors means

- (i) 6 micro centrifuge of 1.5ml capacity
- (ii) 12 micro centrifuge tubes of 0.5ml capacity

To work on 220 volts 50 Hz AC.

Code	Packing
19810000	1

Spare Rotor at extra cost:

Code	Capacity
SSEPL/198/01	6 x 1.5ml.tubes
SSEPL/198/02	12 x 0.5ml.tubes

Technical Data

Size R.P.M.	Weight RCF (x g)	Size R.P.M.
1000	56	6000
2000	223	7000
3000	503	8000
4000	894	9000
5000	1396	10000



199 “VORTIT” Vortex Shaker

Solid & strong construction

Heavy metal base & rubber feet shuns movement of the shaker during operation

Choice of nonstop & touch mode

Changeable speed control

Maximum speed 3000 RPM

Contains one hand insert, micro tube insert & cup attachment

Code	Packing
1993000	1

Spare Rotor at extra cost:

Description	Packing
Spare cup attachment	1
Spare one hand attachment	1
Spare one hand insert	1
Spare Micro tube insert	1



211 Dancing Shaker (Gel Rocker)

Salient Features

Polished stainless steel Platform & Digital Cut-Off Timer (0-60min)

Non-Slippery Mat & the system can run continuously without activating the Timer

PMDC Geared Motor with noise free operation

Switches On automatically during power malfunctions

Technical Specifications

Code	Model	Input Voltage	Timer	Platform Size	Rocking Stroke	Pack
2110001	Mono-Timer	230 V, 50 Hz	0-60 mins	250 x 250 mm	1 to 60	1



Physical Properties & Chemical Resistance of Polymer

	LDPE	HDPE	PP	PMP(TPX)	PVC	PC	PS	ACRYLIC(AC)	PTFE	PFA
Acids-Dilute	Excellent	Excellent	Excellent	Excellent	Excellent	Excellent	Excellent	Good	Excellent	Excellent
Acids-concentrated	Excellent	Excellent	Excellent	Excellent	Excellent	Poor	Limited	Poor	Excellent	Excellent
Alcohols	Excellent	Excellent	Excellent	Excellent	Excellent	Good	Excellent	Poor	Excellent	Excellent
Aldehydes	Good	Good	Excellent	Good	Poor	Limited	Poor	Good	Excellent	Excellent
Bases	Excellent	Excellent	Excellent	Excellent	Excellent	Poor	Excellent	Limited	Excellent	Excellent
Esters	Good	Good	Good	Good	Poor	Poor	Poor	Poor	Excellent	Excellent
Hydrocarbons-aliphatic	Limited	Good	Good	Limited	Excellent	Poor	Poor	Good	Excellent	Excellent
Hydrocarbons-aromatic	Limited	Good	Limited	Limited	Poor	Poor	Poor	Poor	Excellent	Excellent
Hydrocarbons-halogenated	Poor	Limited	Limited	Poor	Poor	Poor	Poor	Poor	Excellent	Excellent
Ketones	Good	Good	Good	Limited	Poor	Poor	Poor	Poor	Excellent	Excellent
Oils, minerals	Limited	Good	Excellent	Excellent	Excellent	Excellent	Excellent	Excellent	Excellent	Excellent
Oils, vegetable	Good	Good	Good	Good	Good	Good	Good	Poor	Excellent	Excellent
Oxidising agents	Limited	Limited	Limited	Limited	Good	Poor	Poor	Poor	Excellent	Excellent

Abbreviations :

U= Unsatisfactory
 G= Good
 L= Limited
 E= Excellent

PC= Polycarbonate
 HDPE= High-Density Polyethylene
 LDPE= Low-Density Polyethylene
 PP= Polypropylene
 PBT= Polybutylene Terephthalate

PS= Polystyrene
 TPX= Polymethypentene
 PTFE= Polyterafluoroethylene
 HIPS= High Impact Polystyrene
 SS= Stainless Steel
 ABS= Acryco Nitrile Butasiene Styrene
 PCR= Polymerase Chain Reaction

Cleaning of Blancoz Plastic ware :

- Plastic ware may be cleaned by washing in a mild detergent. Detergent should be rinsed off first with tap water and then with distilled water.
- Avoid abrasive cleaners of scouring implements. Polycarbonate must not be exposed to strong alkaline cleaning agents.

Physical Properties & Chemical Resistance of Polymer

	LDPE	HDPE	PP	PMP(TPX)	PVC	PC	PS	ACRYLIC(AC)	PTFE	PFA
Legend:										
C Clear										
O Opaque.										
TL Translucent										
R Rigid										
F Flexible										
Max Temp °c	80	120	135	180	70	130	70	90	300	270
Min Temp °c	-50	-100	-20	-180	-25	-135	-40	-60	-200	-260
Autoclavable	NO	NO	YES	YES	NO	YES	NO	NO	YES	YES
Gas sterilisation	YES	YES	YES	YES	YES	YES	YES	YES	YES	YES
Dry Heat sterilisation	NO	NO	NO	YES	NO	NO	NO	NO	YES	YES
Gamma irradiation sterilisation	YES	YES	NO	YES	NO	YES	NO	YES	YES	YES
Chemical Disinfectant sterilisation	YES	YES	YES	YES	YES	YES	YES	NO	NO	YES
Transperancy	TL	TL	TL	C	C	C	C	C	C	TL
Flexibility	F	R	R	R	R	R	R	R	R	F
Gas Permeability N₂	20	3	4.4	65	0.4	3	3	-	-	-
Gas Permeability CO₂	280	45	92	-	10.2	85	75	-	-	-
Gas Permeability O₂	60	10	28	270	1.2	20	15	-	-	-
Water Absorbtion %	<0.01	<0.01	<0.02	<0.01	0.06	0.35	0.05	0.3	0.3	<0.03
Resistivity Ohm CM²	>10 ¹⁵	>10 ¹⁵	>10 ¹⁶	>10 ¹⁶	<10 ¹⁶	2x10 ¹⁶	>10 ¹⁶	>10 ¹⁴	>10 ¹⁸	10 ¹⁸
Specific gravity	0.92	0.95	0.90	0.83	1.34	1.20	1.05	1.18	2.2	2.16

mm cm²/cm² see (cm Hg) x 10¹⁰

Please note that polymer may become malleable at temperatures above 80°C if the product is under structural stress.

* Warning. Material may become brittle at low temperatures

Sterilization:

- Autoclaving : Clean and rinse item with distilled water before autoclaving.
Certain chemicals which have no appreciable effect on resins at room temperature may cause deterioration at autoclaving temperatures unless removed with distilled water before hand.
- Gas: Ethylene oxide
- Dry: Heat at 160C
- Disinfectants: Benzalkonium chloride, formaline, ethanol etc.

Note

- Above physical properties are for general guidance
- It is recommended that user make test under expected used conditions.
- Long term strong oxidising agent in plasticware is not advisable
- Exposure of plastic to flame or hot plates is not recommended.

CAUTION:



Do not store strong oxidizing agents in plastic labware except that made of FEP, PFA or PTFE.
Do not place plastic labware directly on a flame or a hot plate.

TERMS & CONDITIONS

- This catalog amid price list cancels all our earlier catalogs.
- The catalog includes all “Blancöz” brand products & products from our OEM partners.
- GST extra as applicable.
- Our responsibility of goods ceases once the cargo is handed over to transporter.
- Orders will be accepted as per our standard packing or multiple thereof.
- All measuring products are for laboratory use & not for commercial practice.
- The manufacturer reserves the right to change / modify any products without prior notice.
- The catalog amid price list is W.E.F. September 2019.



Blancôz

+ (91) 98265 70000, 90390 07000, 98261 96666, 0771 2293600-700

info@blancoz.in, sachdevscientific10@gmail.com

Office : Harchandrai Harimal, Dal Mill, Near Over Bridge, Telghani Naka, Raipur (C.G.) 492001

Factory : Next to Govt. School, Baloda Bazar Road, Village Saragaon, Raipur (C.G.) 493225

www.blancoz.in

